

LucidShape Application: Test Tables I

Overview

A lighting engineer working with LucidShape created a daytime running light (DRL) to meet European regulations (ECE). The product requirements were then expanded to meet US regulations (SAE) as well. The engineer easily updated the optical system to comply with US regulations after testing the DRL's light pattern and identifying small deviations from US regulations.

The Challenge

- Find the correct regulations from certification offices
- Re-analyze... Figure 1. Light distribution including test points of ECE regulations.

Right: Test Table with results.

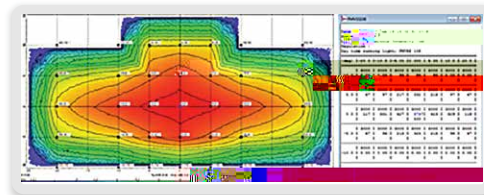


Figure 2. Light distribution including test points of SAE regulations.
Right: Test Table with results.

For more information, please contact Synopsys Optical Solutions Group at 626-792-9101, visit <https://www.synopsys.com/optical-solutions/lucidshape.html>, or send an e-mail to lucidshapeinfo@synopsys.com.